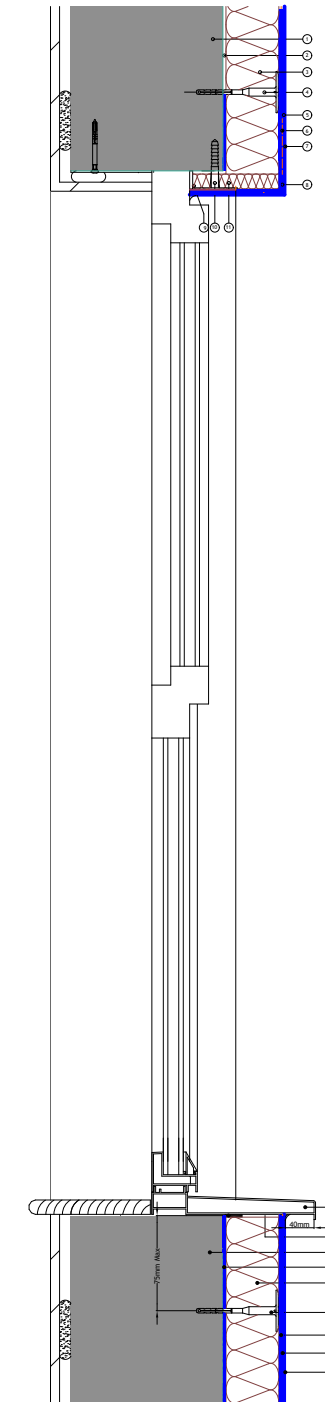
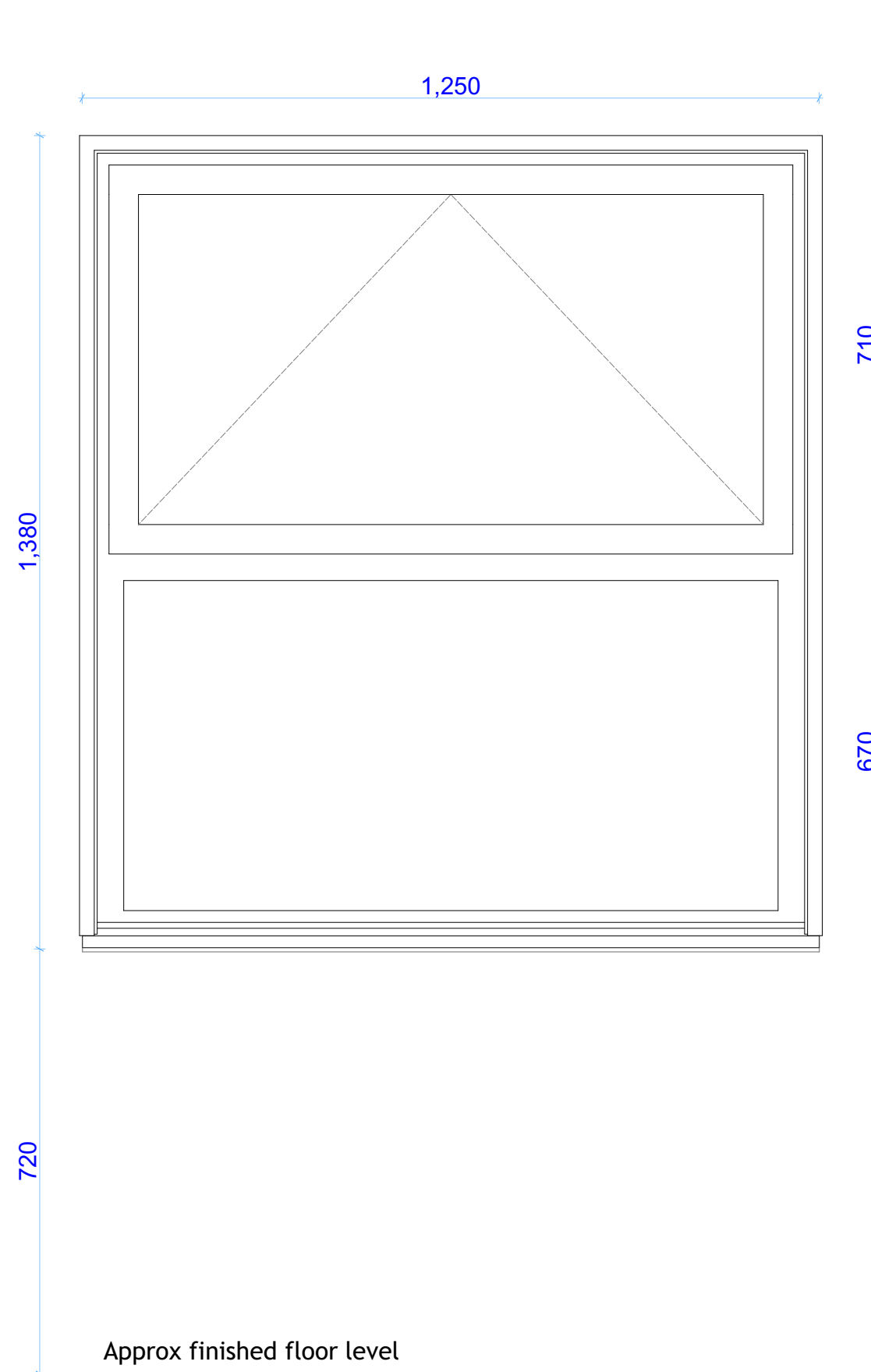


# BEDROOM WINDOWS



**Items:-**

- 1 - Structural Substrate
- 2 - K Systems Insulation Adhesive (please refer to specification)
- 3 - Dual Density Mineral Wool Insulation Board (as per specification)
- 4 - Approved Mechanical Insulation Fixings (as per specification)
- 5 - K Systems Reinforcing Coat (as per specification)
- 6 - K Systems Reinforcing Scrim bedded into K Systems Reinforcing Coat (as per specification)
- 7 - K Systems Decorative Thinfoat Finish (Silicone TC, Acrylic TC, Mineral TC & Silkolitt products)
- 8 - Surface Mounted Mesh-Wing Corner Bead, bedded into Reinforcing Coat (as per specification)
- 9 - K Systems Sealing Tape with Low Modulus Silicone Sealant (as per specification)
- 10 - Approved Mechanical Insulation Fixings for Reveals (as per specification)
- 11 - Reduced thickness Dual Density Mineral Wool Insulation Board for Reveals (as per specification)

**Items:-**

- 1 - Extended Window Cill
- 2 - K Systems Sealing Tape with Low Modulus Silicone Sealant
- 3 - Structural Substrate
- 4 - K Systems Insulation Adhesive (please refer to specification)
- 5 - Dual Density Mineral Wool Insulation Board (as per specification)
- 6 - Approved Mechanical Insulation Fixings (as per specification)
- 7 - K Systems Reinforcing Coat (as per specification)
- 8 - K Systems Reinforcing Scrim bedded into K Systems Reinforcing Coat (as per specification)
- 9 - K Systems Decorative Thinfoat Finish (Silicone TC, Acrylic TC, Mineral TC & Silkolitt products)